



CURRICULUM DESIGNERS

CURRICULUM DESIGNERS INC, RYE, NY

Curriculum Mapping Newsletter

End of School Special
Volume I, No. 4

Greetings!

For many of us the school year is winding to a close this week. With that in mind, this month we feature some excellent articles on the success of Curriculum Mapping, and present a range of Summer and early Fall workshops and conferences.

**12th Annual
National Mapping
Conference - -
July 12-16 in
Sante Fe, NM**

In This Issue

- [12th Annual National Mapping Conference - - July 12-16 in Sante Fe, NM](#)
- [Integrating Assessment Data and Standards Into Curriculum Maps K-12](#)
- [ACTIVE LITERACY IN EVERY CLASSROOM](#)
- [What Comes First, the Egg or the Chicken?](#)
- [Getting Results Through Research -- Teachers' Perceptions of Curriculum Mapping Released Last Month... Heidi's Newest Book](#)
- [Pre-Register for the 2007 National Institute...](#)
- [Upcoming Summer/Fall Conferences and Workshops](#)
- [A Message from Heidi Hayes Jacobs](#)
- [A Note from the Editor](#)



Join us in Sante Fe, NM for the **12th National Curriculum Mapping Institute**. This Institute, sponsored by [TEACHSCAPE](#), is the largest gathering of curriculum mappers in the country and your chance to spend quality time with some of the best practitioners from across the nation.

Integrating Assessment Data and Standards Into Curriculum Maps K-12

**August 17-18, 2006
Augusta, Maine**



Dr. Heidi Hayes Jacobs and Janet Hale, M. Ed, will engage attendees in collaborative conversations concerning ways in which curriculum mapping supports curricula dialogue. Whether you are brand new to the concept of curriculum mapping, or desire a summer refresher, there will be ample opportunities for you to experience the various concepts of mapping.

During the two-day training there will be an emphasis on:

- Investigating mapping elements and defining quality maps
- Translating standards into content and skills
- Assuring that assessments truly measure desired learning
- Addressing curriculum alignment both horizontally and

Cheryl Williams, Vice President for Conferences at TeachScape notes, *"Teachscape is excited to be working with Heidi Hayes Jacobs, Bena Kallick, and their colleagues from across the country on the annual Curriculum Mapping Institute. This event provides solid information and a dynamic learning environment for the educators who participate. As a result of attendance at this*

vertically

- Conducting mapping read-throughs and reviews
- Building a district and school culture that supports mapping
- Evaluating your present or future strategic plans

Dr. Jacobs and Mrs. Hale are looking forward to meeting you and supporting you in your successful mapping implementation, or in an extension of your present work. Plan to attend both large and small- group sessions designed to expand your current knowledge and understanding. There will also be time for open-forum discussion.

[Click here for more information and registration...](#)

ACTIVE LITERACY IN EVERY CLASSROOM

ACTIVE LITERACY IN EVERY CLASSROOM

**September 28-29
East Lansing, Michigan**

How do we improve and sustain student performance over time?

This conference will feature **Dr. Heidi Hayes Jacobs** and **Dr. Rachel Billmeyer**.

An internationally known educational consultant, Rachel has taught elementary, secondary, and university level classes, and is known for her work with reading in the content areas and reading assessment practices. She is author of "Teaching Reading in the Content Areas: If Not Me Then Who?" and "Strategic Reading in the Content Areas and Strategies to Engage the Mind of the Learner." She has served as Program Chair for the Midwest Association for Supervision and Curriculum Development (ASCD) Conference, and has the NE Literacy Award.

After years of work with K-12 vertical planning through curriculum mapping, Dr. Jacobs has developed a set of seven essential literacy strategies to be employed school wide.

Participants will receive special attention on how to analyze assessment data to determine with greater precision which strategies are needed in a school. A team of outstanding practitioners will be joining us to share their successful use

important conference, school teams return to their classrooms and districts with new tools and approaches that translate into improved student performance and teacher effectiveness... goals that are totally aligned with the Teachscape mission."

A separate pre-conference session for those new to Curriculum Mapping will be held on July 12 with the main conference occurring from July 13 through Sunday the 16th.

Heidi Hayes Jacobs and Bena Kallick are the featured keynoters along with nationally-known presenters from every region of the country.

Breakout sessions each day allow participants to interact on a one-to-one basis with mapping facilitators from all areas. **Whether you are in a school with ten staff members or part of a county- wide staff of thousands, there is something at the National Conference for you...**

[Register now for the National Conference...](#)

Helpful Links...

[Register for Summer/Fall](#)

of CM to improve literacy.

[For more information and registration click here...](#)

What Comes First, the Egg or the Chicken?

Types of Maps and Where Should We Start
by Janet Hale, M.Ed.



Educational times have changed and will continue to do so. Given the current environment in politics and education, the need for accountability concerning vertical and horizontal alignment to standards and providing learners with successful, quality education is at the forefront.

In a recent Curriculum Designers' newsletter, Dr. Susan Udelhofen (2006) addressed when and how mapping works. She stated that a critical strategy for keeping mapping alive is "...recognizing and understanding that curriculum mapping isn't the latest new initiative but rather a dynamic, systemic method of curriculum development, discussion and documentation." (p.2) The three Ds: curriculum development, discussion and documentation have a complexity that can be explored through the question, "What comes first, the egg or the chicken?"

[Read the entire article here ...](#)

Getting Results Through Research -- Teachers' Perceptions of Curriculum Mapping

Teachers' Perceptions of Curriculum Mapping as a Tool for Planning and Alignment (2005)

by Michael Lucas, Ed.D.



(Ed. Note: We have provided the introduction and conclusions of this important research below. Click the link at the end of this article to read the entire report.)

There is intense pressure on today's schools to perform well according to academic measures such as state standardized tests. The cause of the pressure is legislation, requiring locally published school report cards, financial incentives or disincentives for school academic performance, increased competition from charter and private schools, and attempts to reconstitute schools suffering from repeatedly poor performance...

...This study, dealing with the curriculum mapping process in a suburban school district, has corroborated what has

[Workshops](#)

[12th Annual National Curriculum Mapping Conference July 13-16 in Sante Fe, NM](#)

[A Build-Your-Own STUDY-CREATE-SHARE network](#)

[More About Curriculum Designers and what we do...](#)

Mapping Software



[Rubicon Atlas](#)



[TechPaths](#)

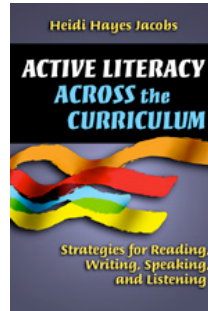
Join our mailing list!

been stated in the literature: curriculum mapping is an efficient and effective tool for instruction planning and curriculum alignment between the taught and written curriculum. Teachers, being the primary practitioners of mapping, have provided evidence that mapping is a useful tool for them as they plan for instruction.

[Read the entire research report here...](#)

Released Last Month... Heidi's Newest Book

Eye on Education publishers have just released Heidi's newest book - *Curriculum Mapping and Active Literacy*



[Read more and order your copy here ...](#)

Pre-Register for the 2007 National Institute...

Mark your calendar now for the 13th Annual National Curriculum Mapping Institute. July 18-22, 2007.

In 2007 we will return to Park City, Utah.

For more information and to reserve your spot now, contact CurricMapping@aol.com

Upcoming Summer/Fall Conferences and Workshops

Visit us this Summer/Fall at one of our upcoming conferences:

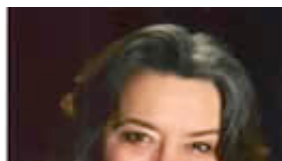
- June 28-30, 2006 - St. Cloud, MN ([SU-Consulting](#))
- July 13-15, 2006 - 12th Annual National Curriculum Mapping Conference - Sante Fe, NM ([Register here](#))
- July 25-27, 2006 - Bismark, ND ([SU-Consulting](#))
- August 17-18, 2006 - Augusta, Maine ([Register here](#))
- September 28-29, 2006 - East Lansing, MI ([Register here](#))
- November 14-15-16, 2006 - Albany, NY ([Info here](#))
- November 29-Dec. 1, 2006 - San Diego, CA ([Info here](#))

[View the Summer/Fall Conference Schedule ...](#)

A Message from Heidi Hayes Jacobs

Welcome to our End-of-School-Year Wrap-Up Edition

To celebrate the close of another school year we feature the National



Conference in Sante Fe and other workshops and conferences available over the summer break.



This month I am also pleased to feature an article by Janet Hale on her CM work in schools which clarifies many of the terms we use and also introduces some new concepts. Janet will be co-presenting at the Augusta, ME conference.

I am also pleased to share the research work of Dr. Mike Lucas. His research on the perceptions of teachers who map documents what we have all seen in our work - Curriculum Mapping does have a positive impact on those of us who teach, and through us provides a positive impact upon students.

We will take some short breaks this summer as well, and plan a combined June/July summer newsletter and then a combined Back-to-School August/September issue which will include reports on the National CM conference.

- Heidi

A Note from the Editor



Some of you already know that I assumed the role of newsletter editor when we launched this past January. My thought was to remain behind-the-scenes, but Heidi insisted my name appear somewhere. So here I am. And it is an incredible honor to have my name attached to Heidi's through this team effort.

Check the helpful link titled *A Build-Your- Own STUDY-CREATE-SHARE network* (www.ectoprep.com). It is a creative concept developed by a friend of mine, and is being offered during beta testing at no charge to tutors and their students. If you tutor during the school year or over the summer, drop them an email, mention our newsletter, and ask for a free no-obligation user ID.

For those of you who don't know me, I spent 35 years in an elementary classroom, became a curriculum mapper more than ten years ago, and through the encouragement of Heidi, created a new career facilitating the mapping process in schools around the country. My emphasis continues to be the consensus building we see through mapping and the better use of technology in teaching kids.

Watch for exciting new things from Curriculum Designers and The Center for Curriculum Mapping in the very near future as we kick-off Back-to-School in August. One new integration we will feature this fall is the potential of the digital portfolio work of David Niguidula. I recently spent an incredible afternoon with David in Providence, RI and was able to experience the success of his work. Expect more details on this in our Summer/Fall issues.

We are hoping to share best mapping practices in each issue. **Please send your articles, photos, questions and comments to newsletter@curriculumdesigners.com so that we may continue to feature how we are "Getting Results" throughout the entire mapping community.**

-- Earl Nicholas, B.S., M.S. Ed., Editor

email: newsletter@curriculumdesigners.com

phone: 914-921-2046

web: <http://www.curriculumdesigners.com>